



OsteoBiol[®]
by Tecnos

Putty

ENGINEERED FOR PERI-IMPLANT DEFECTS

Pre-hydrated collagenated heterologous cortico-cancellous bone paste

REGENERATION SCIENCE

INSPIRED BY NATURE



A unique biotechnology

TECNOSS®: A UNIQUE PROCESS THAT ACCELERATES AND GUIDES NATURAL BONE REGENERATION

Tecnoss® developed and patented a unique biotechnology that prevents the ceramization phase of natural bone and preserves the tissue collagen, allowing an osteoclastic-type remodelling of the biomaterial similar to physiological bone turnover and delivering a product endowed with characteristics very similar to human mineral bone⁽¹⁾.

The combination of these factors allows a consistent new bone formation and a close contact between neo-formed bone and biomaterial granules and a consequent improvement of the contact area around implants (Fig. A).

COLLAGEN: A KEY FACTOR FOR BONE REGENERATION

Collagen has a key role in bone regeneration process in that:

- it acts as a valid substrate for platelet activation and aggregation
- it serves to attract and differentiate the mesenchymal stem cells present in the bone marrow⁽²⁾
- it increases the proliferation rate of the osteoblasts up to 2/3 times⁽³⁾
- it stimulates the activation of the platelets, osteoblasts and osteoclasts in the tissue healing process

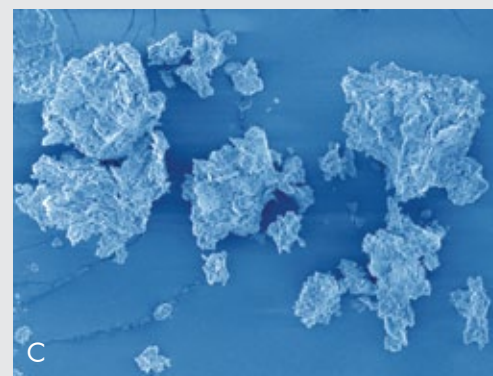
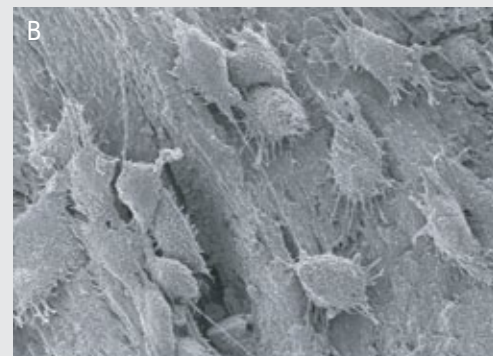
OSTEOBIOL®: UNIQUE COLLAGENATED BIOMATERIALS

Thanks to the innovative Tecnoss® technology, the OsteoBiol® line has the following important characteristics:

- absence of a foreign body response⁽⁴⁾
- gradual resorption over time^(5,6)
- stimulation/acceleration of physiological tissue healing process⁽²⁾
- protection of the grafting site from infection (membranes)⁽⁷⁾
- capability of carrying medication to the surgical site⁽⁸⁾

The Tecnoss® new generation of biomaterials, thanks to a revolutionary technology, goes beyond the simple role of aiding natural bone regrowth by stimulating and accelerating this vital physiological process.

OsteoBiol®
by Tecness



A | Image showing bone formation on implant surface at 5 weeks on rabbit. Right side grafted with OsteoBiol® Putty. Left side left to self natural healing. Staining hematoxyline-eosine. Courtesy of Prof U Nannmark, University of Göteborg, Sweden

B | SEM image of an OsteoBiol® bone matrix colonized by osteoblasts from a cell-line (MG63). Courtesy of Prof U Nannmark, University of Göteborg, Sweden

C | SEM image showing the mixed sizes OsteoBiol® Putty particles, granulometry of up to 300 microns. Courtesy of Prof U Nannmark, University of Göteborg, Sweden

(1) Figueiredo M et al. J Biomed Mater Res B Appl Biomater, 2010 Feb; 92(2):409-419

(2) Brunelli G et al. Eur J Inflamm, 2011, Vol. 9, no. 3 (S), 103-107

(3) Hsu FY et al. Biomaterials, 1999, 20:1931-1936

(4) Crespi R et al. Int J Oral Maxillofac Implants, 2011 Jul - Aug; 26(4):866-72

(5) Nannmark U, Sennerby L. Clin Implant Dent Relat Res, 2008 Dec; 10(4):264-70

(6) Barone A et al. Clin Implant Dent Relat Res, 2012 Jun; 14(3):373-9

(7) Barone A et al. Clin Oral Implants Res, 2013 Nov; 24(11):1231-7

(8) Fischer K et al. Clin Oral Implants Res, 2014 Sep 15 Epub ahead of print



Engineered for peri-implant defects



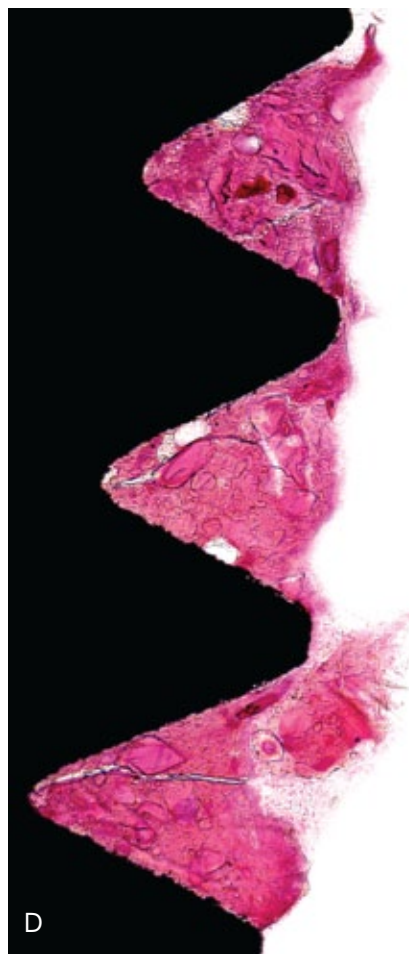
Putty is a collagenated bone paste composed by 80% micronized cortico-cancellous granules (granulometry up to 300 μm) mixed with 20% collagen gel.

The exclusive Tecnos[®] manufacturing process guarantees an exceptional malleability and plasticity, making it the ideal choice for post-extractive sockets, self-contained peri-implant defects and all defects that present a self-contained cavity.

Thanks to the collagen component, Putty facilitates blood clotting and the subsequent invasion of repairing and regenerative cells, showing an osteoconductive behaviour⁽⁹⁾. Furthermore, the Tecnos[®] manufacturing process avoids granules ceramization, allowing a progressive resorption⁽⁵⁾ of the biomaterial and, at the same time, a significant new-bone formation rate⁽¹⁰⁾. Putty's "soft" consistency also guarantees an easy and healthy soft-tissues healing.

Thanks to these unique characteristics, Putty is particularly indicated for peri-implant defects regeneration: following immediate post-extractive implants placement, Putty can be injected between the defect walls and the implant⁽¹¹⁾, guaranteeing a perfect filling of the entire defect volume⁽¹²⁾.

The product versatility also makes Putty the ideal solution when bone tissue has been lost due to peri-implant lesions as long as the containing walls are present. In fact, the primary condition for gaining a successful regeneration is to achieve the biomaterial initial stability. Therefore, Putty must be used only in self contained defects where the surrounding walls guarantee this condition: for example post-extractive sockets⁽¹³⁾ and inside the bone crest when ridge-split technique^(14,15) is adopted.



D | Detail of image showing bone formation on implant surface at 5 weeks on rabbit grafted with OsteoBio[®] Putty. Staining hematoxyline-eosine. Courtesy of Prof U Nannmark, University of Göteborg, Sweden

Tissue of origin

Cortico-cancellous heterologous bone mix

Tissue collagen

Preserved plus an additional 20% collagen gel

Physical form

Plastic consistency composed of collagen gel loaded with 80% micronized bone mix

Composition

80% granulated mix, 20% collagen gel

Granulometry

Up to 300 μm

Re-entry time

About 4 months

Packaging

Syringe: 0.5 cc, 1.0 cc, 3x0.5 cc, 3x0.25 cc

Product codes

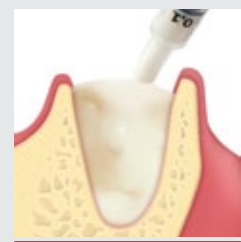
HPT09S | 1 Syringe | 0.5 cc | Porcine
HPT09E | 1 Syringe | 0.5 cc | Equine
HPT35S | 3 Syringes | 3x0.5 cc | Porcine
HPT35E | 3 Syringes | 3x0.5 cc | Equine
HPT32S | 3 Syringes | 3x0.25 cc | Porcine
HPT32E | 3 Syringes | 3x0.25 cc | Equine

Wide tip

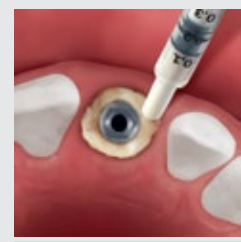
HPT61S | 1 Syringe | 1.0 cc | Porcine
HPT61E | 1 Syringe | 1.0 cc | Equine

GMDN code

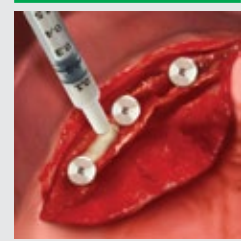
38746



POST-EXTRACTIVE SOCKETS



PERI-IMPLANT DEFECTS



RIDGE SPLIT

(9) Calvo Guirado JL et al. J Implant Dent, 2012 Apr;21(2):112-7

(10) Nannmark U, Azarmehr I, Clin Implant Dent Relat Res, 2010 Jun 1; 12(2):161-3

(11) Barone A et al. Eur J Implant Prosthodontics, 2006, 2:99-106

(12) Cassetta M et al. Int J Periodontics Restorative Dent, 2012 Oct;32(5):581-9

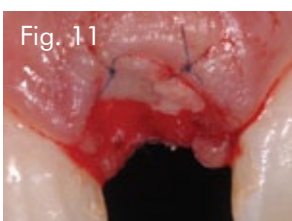
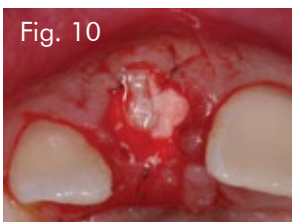
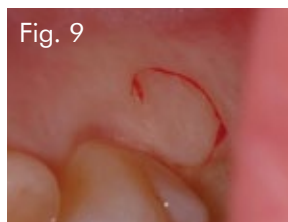
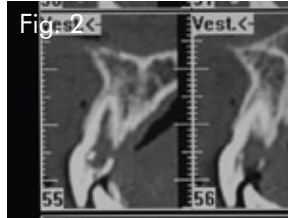
(13) Arcuri C et al. Minerva Stomatol, 2005 Jun; 54(6):351-62

(14) Calvo Guirado JL et al. J Ir Dent Assoc, 2007 Winter 53(4):187-90

(15) Santagata M et al. J Oral Implantol, 2011 Mar;37 Spec N.:114-9



Excellent clinical performances



CASE REPORT

PERI-IMPLANT DEFECT

Treatment of peri-implant defect after post-extractive implant placement

Sex: **Female** | Age: **32**

Fig. 1 Preliminary panoramic view

Fig. 2 Dentascan shows internal root resorption of tooth 1.1

Fig. 3 Buccal view

Fig. 4 Palatal view

Fig. 5 Occlusal view after extraction

Fig. 6 Osteotomy performed

Fig. 7 Implant in place

Fig. 8 Peri-implant gap grafted with OsteoBiol® Putty

Fig. 9 Free gingival graft harvested from the palate

Fig. 10 Occlusal view

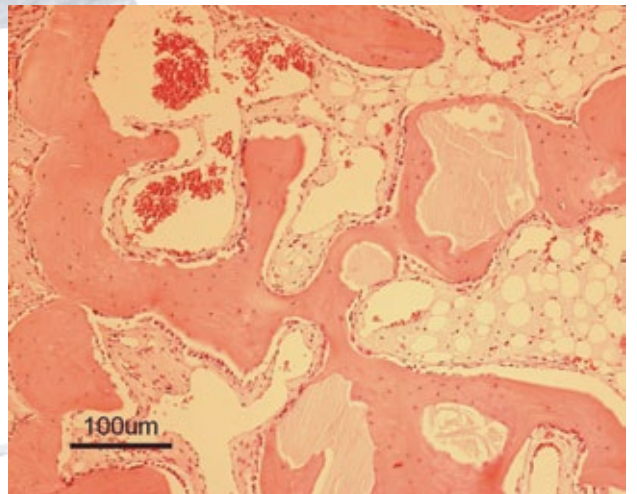
Fig. 11 Buccal view

Fig. 12 Temporary restoration in place

Documentation courtesy of
Dr **Roberto Rossi**
M.Sc.P. in Periodontology
Private practitioner in Genova, Italy
e-mail: drrossi@mac.it

Bone substitute: **OsteoBiol® Putty**

- Cassetta M, Calasso S, Vozza I, Dell'Aquila D
REHABILITATION OF ATROPHIC ALVEOLAR CRESTS WITH CYLINDRICAL SANDBLASTED AND ACID ETCHED IMPLANTS: A PILOT STUDY
 EUR J IMPLANT PROSTHODONTICS, 2005; (3)1:133-144
- Arcuri C, Cecchetti F, Germano F, Motta A, Santacroce C
CLINICAL AND HISTOLOGICAL STUDY OF A XENOGENIC BONE SUBSTITUTE USED AS A FILLER IN POSTEXTRACTIVE ALVEOLUS
 MINERVA STOMATOL, 2005 JUN;54(6):351-62
- Barone A, Crespi R, Aldini NN, Fini M, Giardino R, Covani U
MAXILLARY SINUS AUGMENTATION: HISTOLOGIC AND HISTOMORPHOMETRIC ANALYSIS
 INTERNATIONAL JOURNAL OF ORAL AND MAXILLOFACIAL IMPLANTS, 2005
- Barone A, Ameri S, Covani U
IMMEDIATE POSTEXTRACTION IMPLANTS: TREATMENT OF RESIDUAL PERI-IMPLANT DEFECTS. A RETROSPECTIVE ANALYSIS
 EUR J IMPLANT PROSTHODONTICS, 2006;2: 99-106
- Barone A, Santini S, Sbordone L, Crespi R, Covani U
A CLINICAL STUDY OF THE OUTCOMES AND COMPLICATIONS ASSOCIATED WITH MAXILLARY SINUS AUGMENTATION
 INT J ORAL MAXILLOFAC IMPLANTS, 2006 JAN-FEB; 21(1):81-5
- Covani U, Barone A, Cornelini R, Crespi R
CLINICAL OUTCOME OF IMPLANTS PLACED IMMEDIATELY AFTER IMPLANT REMOVAL
 J PERIODONTOL, 2006 APR;77(4):722-7
- Orsini G, Scarano A, Piattelli M, Piccirilli M, Caputi S, Piattelli A
HISTOLOGIC AND ULTRASTRUCTURAL ANALYSIS OF REGENERATED BONE IN MAXILLARY SINUS AUGMENTATION USING A PORCINE BONE-DERIVED BIOMATERIAL
 J PERIODONTOL, 2006 DEC;77(12):1984-90
- Trubiani O, Scarano A, Orsini G, Di Iorio D, D'Arcangelo C, Piccirilli M, Sigismondo M, Caputi S
THE PERFORMANCE OF HUMAN PERIODONTAL LIGAMENT MESENCHYMAL STEM CELLS ON XENOGENIC BIOMATERIALS
 INT J IMMUNOPATHOL PHARMACOL, 2007 JAN-MAR; 20(1 SUPPL 1):87-91
- Barone A, Covani U
MAXILLARY ALVEOLAR RIDGE RECONSTRUCTION WITH NONVASCULARIZED AUTOGENOUS BLOCK BONE: CLINICAL RESULTS
 J ORAL MAXILLOFAC SURG, 2007 OCT;65(10):2039-46
- Calvo Guirado JL, Pardo Zamora G, Saez Yuguero MR
RIDGE SPLITTING TECHNIQUE IN ATROPHIC ANTERIOR MAXILLA WITH IMMEDIATE IMPLANTS, BONE REGENERATION AND IMMEDIATE TEMPORISATION: A CASE REPORT
 J IR DENT ASSOC, 2007 WINTER;53(4):187-90
- Barone A, Santini S, Marconcini S, Giacomelli L, Gherlone E, Covani U
OSTEOTOMY AND MEMBRANE ELEVATION DURING THE MAXILLARY SINUS AUGMENTATION PROCEDURE. A COMPARATIVE STUDY: PIEZOELECTRIC DEVICE VS. CONVENTIONAL ROTATIVE INSTRUMENTS
 CLIN ORAL IMPLANTS RES, 2008 MAY;19(5):511-5. EPUB 2008 MAR 26
- Barone A, Cornelini R, Ciaglia R, Covani U
IMPLANT PLACEMENT IN FRESH EXTRACTION SOCKETS AND SIMULTANEOUS OSTEOTOME SINUS FLOOR ELEVATION: A CASE SERIES
 INT J PERIODONTICS RESTORATIVE DENT, 2008 JUN; 28(3):283-9
- Barone A, Aldini NN, Fini M, Giardino R, Calvo Guirado JL, Covani U
XENOGRAFT VERSUS EXTRACTION ALONE FOR RIDGE PRESERVATION AFTER TOOTH REMOVAL: A CLINICAL AND HISTOMORPHOMETRIC STUDY
 J PERIODONTOL, 2008 AUG;79(8):1370-7
- Covani U, Cornelini R, Barone A
BUCCAL BONE AUGMENTATION AROUND IMMEDIATE IMPLANTS WITH AND WITHOUT FLAP ELEVATION: A MODIFIED APPROACH
 INT J ORAL MAXILLOFAC IMPLANTS, 2008 SEP-OCT; 23(5):841-6
- Cardaropoli D, Cardaropoli G
PRESERVATION OF THE POSTEXTRACTION ALVEOLAR RIDGE: A CLINICAL AND HISTOLOGIC STUDY
 INT J PERIODONTICS RESTORATIVE DENT, 2008 OCT; 28(5):469-77
- Nannmark U, Sennerby L
THE BONE TISSUE RESPONSES TO PREHYDRATED AND COLLAGENATED CORTICO-CANCELLOUS PORCINE BONE GRAFTS: A STUDY IN RABBIT MAXILLARY DEFECTS
 CLIN IMPLANT DENT RELAT RES, 2008 DEC;10(4):264-70. EPUB 2008 JAN 30
- Scarano A, Piattelli A, Perrotti V, Manzon L, Iezzi G
MAXILLARY SINUS AUGMENTATION IN HUMANS USING CORTICAL PORCINE BONE: A HISTOLOGICAL AND HISTOMORPHOMETRIC EVALUATION AFTER 4 AND 6 MTH
 CLIN IMPLANT DENT RELAT RES, 2011 MAR; 13(1):13-18
- Scarano A, Piattelli M, Carinci F, Perrotti V
REMOVAL, AFTER 7 YEARS, OF AN IMPLANT DISPLACED INTO THE MAXILLARY SINUS. A CLINICAL AND HISTOLOGIC CASE REPORT
 J OSSEOINTEGR, 2009;1(1):35-40
- Covani U, Marconcini S, Crespi R, Barone A
IMMEDIATE IMPLANT PLACEMENT AFTER REMOVAL OF A FAILED IMPLANT: A CLINICAL AND HISTOLOGICAL CASE REPORT
 J ORAL IMPLANTOL, 2009; 35(4):189-95
- Calvo Guirado JL, Gomez Moreno G, Lopez Mari L, Ortiz Ruiz AJ, Guardia J
ATRAUMATIC MAXILLARY SINUS ELEVATION USING THREADED BONE DILATORS FOR IMMEDIATE IMPLANTS. A THREE-YEAR CLINICAL STUDY
 MED ORAL PATOL ORAL CIR BUCAL, 2010 MAR 1; 15(2):E366-70
- Figueiredo M, Henriques J, Martins G, Guerra F, Judas F, Figueiredo H
PHYSICO-CHEMICAL CHARACTERIZATION OF BIOMATERIALS COMMONLY USED IN DENTISTRY AS BONE SUBSTITUTES - COMPARISON WITH HUMAN BONE
 J BIOMED MATER RES B APPL BIOMATER, 2010 FEB; 92(2):409-19
- Crespi R, Cappare P, Gherlone E
DENTAL IMPLANTS PLACED IN EXTRACTION SITES GRAFTED WITH DIFFERENT BONE SUBSTITUTES: RADIOGRAPHIC EVALUATION AT 24 MONTHS
 J PERIODONTOL, 2009 OCT; 80(10):1616-1621
- Cardaropoli D, Cardaropoli G
HEALING OF GINGIVAL RESSIONS USING A COLLAGEN MEMBRANE WITH A DEMINERALIZED XENOGRAFT: A RANDOMIZED CONTROLLED CLINICAL TRIAL
 INT J PERIODONTICS RESTORATIVE DENT, 2009 FEB; 29(1):59-67
- Nannmark U, Azarmehr I
SHORT COMMUNICATION: COLLAGENATED CORTICO-CANCELLOUS PORCINE BONE GRAFTS. A STUDY IN RABBIT MAXILLARY DEFECTS
 CLIN IMPLANT DENT RELAT RESE, 2010 JUN 1; 12(2):161-3. EPUB 2010 APR 9
- Barone A, Ricci M, Covani U, Nannmark U, Azarmehr I, Calvo-Guirado JL
MAXILLARY SINUS AUGMENTATION USING PREHYDRATED CORTICO-CANCELLOUS PORCINE BONE: HISTOMORPHOMETRIC EVALUATION AFTER 6 MTH
 CLIN IMPLANT DENT RELAT RES, 2012 JUN;14(3):373-9. EPUB 2010 MAY 11
- Scarano A, Carinci F, Assenza B, Piattelli M, Murrura G, Piattelli A
VERTICAL RIDGE AUGMENTATION OF ATROPHIC POSTERIOR MANDIBLE USING AN INLAY TECHNIQUE WITH A XENOGRAFT WITHOUT MINISCREWS AND MINIPLATES: CASE SERIES
 CLIN ORAL IMPLANTS RES, 2011 OCT;22(10):1125-30. EPUB 2011 JAN 20
- Pagliani L, Andersson P, Lanza M, Nappo A, Verrocchi D, Volpe S, Sennerby L
A COLLAGENATED PORCINE BONE SUBSTITUTE FOR AUGMENTATION AT NEOS IMPLANT SITES: A PROSPECTIVE 1-YEAR MULTICENTER CASE SERIES STUDY WITH HISTOLOGY
 CLIN IMPLANT DENT RELAT RES, 2012 OCT;14(5):746-58. EPUB 2010 OCT 26
- Santagata M, Guariniello L, Tartaro G
A MODIFIED EDENTULOUS RIDGE EXPANSION (MERE) TECHNIQUE FOR IMMEDIATE PLACEMENT OF IMPLANTS. A CASE REPORT
 J ORAL IMPLANTOL, 2011 MAR;37 SPEC N.:114-9. EPUB 2010 JUN 16
- Barone A, Ricci M, Calvo Guirado JL, Covani U
BONE REMODELLING AFTER REGENERATIVE PROCEDURES AROUND IMPLANTS PLACED IN FRESH EXTRACTION SOCKETS: AN EXPERIMENTAL STUDY IN BEAGLE DOGS
 CLIN ORAL IMPLANTS RES, 2011 OCT;22(10):1131-7
- Cassetta M, Ricci L, Iezzi G, Dell'Aquila D, Piattelli A, Perrotti V
RESONANCE FREQUENCY ANALYSIS OF IMPLANTS INSERTED WITH A SIMULTANEOUS GRAFTING PROCEDURE: A 5-YEAR FOLLOW-UP STUDY IN MAN
 INT J PERIODONTICS RESTORATIVE DENT, 2012 OCT;32(5):581-9
- Bottni Lp, Ricci L, Piattelli A, Perrotti V, Iezzi G
BUCCO-LINGUAL CRESTAL BONE CHANGES AROUND IMPLANTS IMMEDIATELY PLACED IN FRESH SOCKETS IN ASSOCIATION OR NOT WITH PORCINE BONE: A NON-BLINDED RANDOMIZED CONTROLLED TRIAL IN HUMANS
 J PERIODONTOL, 2012 OCT 29, EPUB AHEAD OF PRINT
- Figueiredo A, Coimbra P, Cabrita A, Guerra F, Figueiredo M
COMPARISON OF A XENOGENIC AND AN ALLOPLASTIC MATERIAL USED IN DENTAL IMPLANTS IN TERMS OF PHYSICO-CHEMICAL CHARACTERISTICS AND IN VIVO INFLAMMATORY RESPONSE
 MATER SCI ENG C MATER BIOL APPL, 2013 AUG 1;33(6):3506-13. EPUB 2013 MAY 3
- Calvo Guirado JL, Gomez Moreno G, Guardia J, Ortiz Ruiz A, Piattelli A, Barone A, Martinez González Jm, Mesenguer Olmo L, López Mari L, Dorado Cb
BIOLOGICAL RESPONSE TO PORCINE XENOGRAFT IMPLANTS: AN EXPERIMENTAL STUDY IN RABBITS
 IMPLANT DENT, 2012 APR;21(2):112-7
- Barone A, Borgia V, Covani U, Ricci M, Piattelli A, Iezzi G
FLAP VERSUS FLAPLESS PROCEDURE FOR RIDGE PRESERVATION IN ALVEOLAR EXTRACTION SOCKETS: A HISTOLOGICAL EVALUATION IN A RANDOMIZED CLINICAL TRIAL
 CLIN ORAL IMPLANTS RES, 2014 MAR 1 EPUB AHEAD OF PRINT
- Cassetta M, Perrotti V, Calasso S, Piattelli A, Sinjari B, Iezzi G
BONE FORMATION IN SINUS AUGMENTATION PROCEDURES USING AUTOLOGOUS BONE, PORCINE BONE, AND A 50 : 50 MIXTURE: A HUMAN CLINICAL AND HISTOLOGICAL EVALUATION AT 2 MONTHS
 CLIN ORAL IMPLANTS RES, 2014 MAY 26 EPUB AHEAD OF PRINT
- Fischer Kr, Stavropoulos A, Calvo Guirado JL, Schneider D, Fickl S
INFLUENCE OF LOCAL ADMINISTRATION OF PAMIDRONATE ON EXTRACTION SOCKET HEALING - A HISTOMORPHOMETRIC PROOF-OF-PRINCIPLE PRE-CLINICAL IN VIVO EVALUATION
 CLIN ORAL IMPLANTS RES, 2014 SEP 15 EPUB AHEAD OF PRINT



Part of a biopsy showing newly formed bone after treatment with OsteoBiol® Putty. Biopsies were taken 5 weeks after implantation in rabbit maxillae. The smaller granules are totally covered by newly formed bone and seams of osteoblasts are recorded almost at all bone surfaces. Both the marrow spaces and bone are fully nurtured by neovessels. Htx-eosine. Original magnification x20. Courtesy of Prof U Nannmark, Göteborg University.

All literature about OsteoBiol® Putty in blue

Putty

ENGINEERED FOR PERI-IMPLANT DEFECTS

Pre-hydrated collagenated heterologous cortico-cancellous bone paste



Tecnos s.r.l. is an innovative, globally active company that develops, produces and documents premium-quality xenogenic biomaterials by the brands Tecnos® and OsteoBiol®.

Its 20 years of research led to its patent-protected production process that ensures neutralization of antigenic components in order to achieve biocompatibility, while preserving the natural collagen matrix inside the biomaterial.

Tecnos® products comply with highest quality standards such as ISO 10993, ISO 13485 (notified body Kiwa Cermet) and 93/42/EC (notified body CE 0373).

osteobiol.com

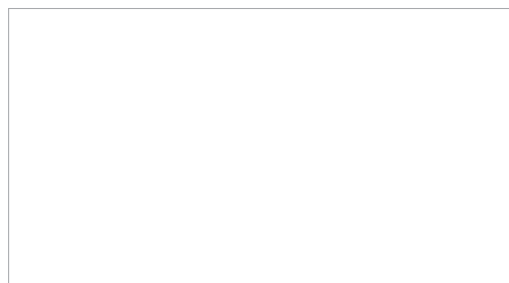
Authorized Distributor

Tecnos® Dental

Via Torino, 23
10044 Pianezza (TO) | Italy
Tel +39 011 9682823
Fax +39 011 9787577
info@tecnoss-dental.com

www.osteobiol.com

International Sales & Marketing



MKT-HPT0415EN

